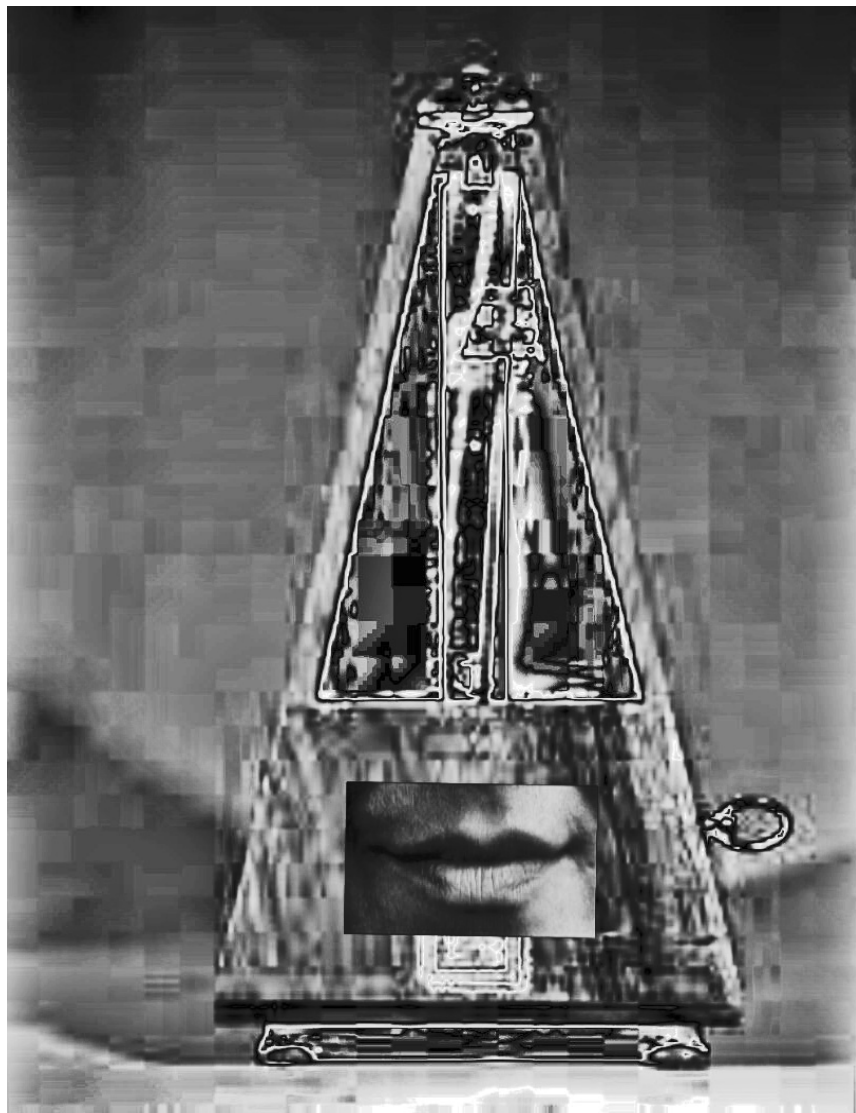


Jörg Partzsch

TRICKY TICKY THING



Tricky ticky thing

for soprano recorder and metronome

Jörg Partzsch 2013

Stage appearance: take a metronome out of your pocket and place it on a little table in front of you. Look at it in love and tenderness. Adjust the metronome speed with a devoted look. With a small sigh start it...

$\text{♩} = 72$

recorder

metronome

sputato

11 *smile* *very dedicated*

20 *slightly shaky and whisper relieved: jaaa*

27 *look dreamfully*

38 *pensive and profound*

47 *happy*

56

call out enthusiastically: yeah!

Detailed description: This system contains measures 56 to 65. The top staff is in treble clef, starting with a 3/16 time signature and changing to 2/4 at measure 61. It features a complex melodic line with many sixteenth notes and slurs. The bottom staff is in bass clef, showing a rhythmic accompaniment with 'x' marks for notes. Performance instructions include 'call out enthusiastically: yeah!' and dynamic markings like '>' and '<'. A fermata is placed over the final note of measure 65.

65

passionate and floating

Detailed description: This system contains measures 65 to 70. The top staff continues the melodic line with slurs and dynamic markings. The bottom staff shows the corresponding bass line. The instruction 'passionate and floating' is written above the staff. A fermata is present at the end of measure 70.

70

con voce

Detailed description: This system contains measures 70 to 75. The top staff features a melodic line with slurs and a triplet of eighth notes in measure 74. The bottom staff shows the bass line. The instruction 'con voce' is written above the staff. A fermata is at the end of measure 75.

75

gliss

Detailed description: This system contains measures 75 to 81. The top staff has a melodic line with slurs and a 'gliss' marking. The bottom staff shows the bass line. A fermata is at the end of measure 81.

81

look into the wideness

sigh: ah

Detailed description: This system contains measures 81 to 88. The top staff has a melodic line with a 'sigh: ah' marking and a fermata. The bottom staff shows the bass line. Time signatures 4+5/16 and 3+2/16 are indicated. A fermata is at the end of measure 88.

88

Detailed description: This system contains measures 88 to 96. The top staff has a melodic line with a wavy line above it. The bottom staff shows the bass line. A fermata is at the end of measure 96.

96

Labium Vibr.

gliss

Detailed description: This system contains measures 96 to 104. The top staff has a melodic line with a wavy line labeled 'Labium Vibr.' and 'gliss' markings. The bottom staff shows the bass line. A fermata is at the end of measure 104.

107 *bouncy*

115

122

128

133

141

go to Coda 1, or Coda 2, or Coda 3

alternative CODA 1
masochistic

146

149

slightly uncertain glances into the audience

152

155

slightly uncertain glances into the audience

161

laugh bashfully and hysterically

hhhhh

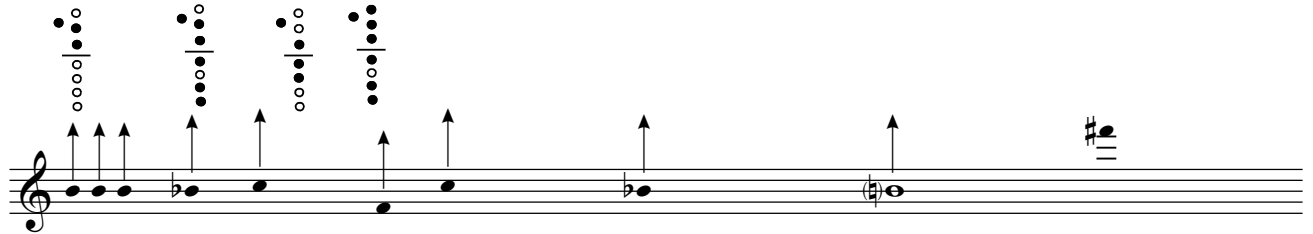
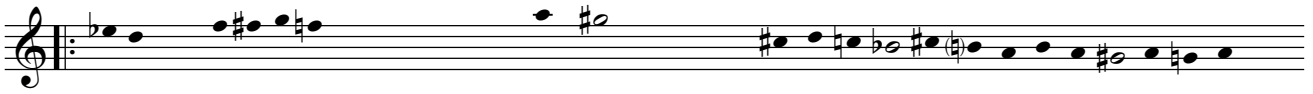
170

satisfied

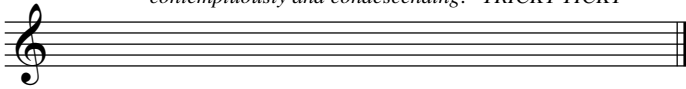
Take the ticking metronome and look at it in love and say enthusiastically and very moving: "TICKY!"
 then with great warmth and very trashy and high voice: "TRICKY THING!"
 After a moment: press the metronom on the body and then turn off...

alternative CODA 2
rebellious

play absolutely free and freaky to the metronome beats



*turn the metronome off,
call irritated and abusive: "THING!"
contemptuously and condescending: "TRICKY TICKY"*



repeat several times *repeat several times*

whisper: tri - cky ti - cky tri - cky

Multiphonics

play and do something irrational ...